



COMPANY PROFILE  
**ARK VIETNAM**



[arkvietnam.com/](http://arkvietnam.com/) [ark-vn.com](http://ark-vn.com)





# CONTENT

- 01** ABOUT US
- 02** BUSINESS AREA
- 03** AFTER SALE SERVICE
- 04** PROJECTS

## 01 ABOUT US

- 1.1 Business philosophy and vision
- 1.2 Contact and organizations
- 1.3 Certifications





## BUSINESS PHILOSOPHY

Dear Customer,  
ARK would like to send greetings and best wishes for health and success to customers.

As a company from Korea, specializing in manufacturing and supplying all kinds of machines and auxiliary equipment for sludge dewatering.

With nearly 30 years of experience in the industry and has been present in Vietnam since 2011, **ARK Vietnam is proud to be the only enterprise in Vietnam that can master technology, produce all types of mud presses by itself, satisfy all customer needs.**

In the context of the deteriorating global environment, ARK Vietnam understands our responsibility, continuously improves technology, invests in equipment to bring the best quality products to customers, contributes to environmental protection, conserve water resources on earth, and at the same time improve the economic efficiency in production of customers.  
Sincerely thank you.

**For clean Aqua  
Perfect treatment for sludge  
Pleasant our Earth**



## VISION

ARK Korea Company has formed and developed for nearly 30 years with vast experience, and a series of large customers around the world.

From that foundation, we have established ARK Vietnam since 2011. Here, we have built a factory with modern machinery and equipment, applying Korean technology to production.

Southeast Asia currently has a very fast development speed, with many economic potentials. At the same time, environmental requirements are also increasingly focused. Vietnam is now also a bright spot in ASEAN, so ARK Vietnam's goal is to become the number one enterprise in the field of manufacturing and supplying sludge dewatering machines, thereby being a stepping stone to reach out to the region. Southeast Asia.

In fact, ARK Vietnam has now been trusted by many customers during our development journey during the past time.







## CONTACT

### Vietnam

arkvietnam.com

#### VIETNAM, HANOI OFFICE

5th Floor, N03-T7 Building, Ngoai Giao Doan Resident, Bac Tu Liem, Hanoi

Technical and sale consultant:

**T.** 0365 580 757

**C.P** 0977 675 754

**E.** arkvn234@gmail.com

#### VIETNAM, HO CHI MINH CITY OFFICE

197 Huynh Tan Phat Street, Tan Thuan Dong, 7 District, Ho Chi Minh City

Technical and sale consultant:

**T.** 0365 580 757

**C.P** 0977 675 754

**E.** arkvn234@gmail.com

#### VIETNAM, BAC GIANG FACTORY

Lot FJ-11, FJ-12, FJ-13, Song Khe Industrial Zone, Noi Hoang (Southern), Tien Phong, Yen Dung, Bac Giang

**T.** 02403 661 849

Technical and Sale consultant:

**C.P** 0961 358 516 (Korean)

**C.P** 0968 376 203 (Vietnamese)

**E.** arkvn234@gmail.com

### Korea

ar-korea.com

#### KOREA, OFFICE AND FACTORY

1 dong 203-17, Eunhaengnamu-ro, Yanggam-myeon, Hwangseong-si, Gyeonggi-do, 18633, Korea

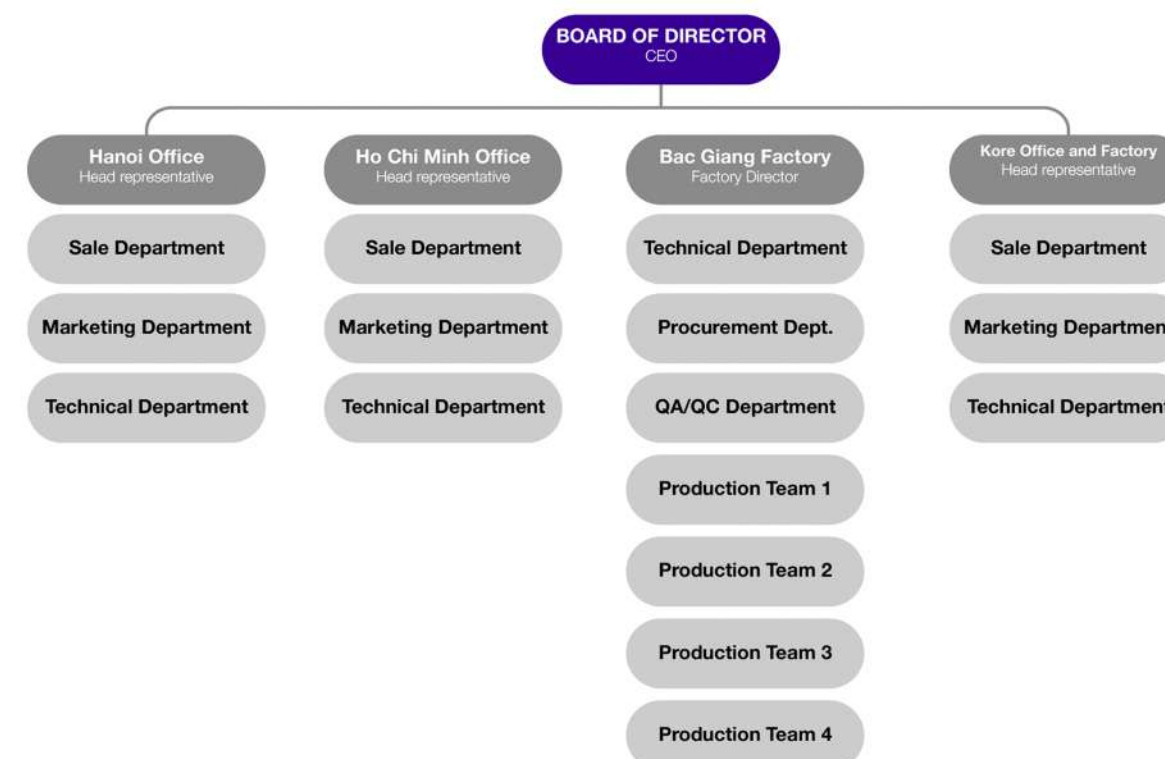
**T.** +82 31 354 7223

**F.** +82 31 8059 6895

**E.** sludge234@gmail.com



## ORGANIZATION CHART







## CERTIFICATIONS AND REWARDS

After years of development, ARK Vietnam has won many awards and certifications for the quality of products, services and management systems.



## 02 Business area

2.1 Manufacturing, supplying sludge dewatering machines

2.2 Supplying auxiliary equipment, material for sludge dewatering work





## MANUFACTURING, SUPPLYING SLUDGE DEWATERING MACHINES

### DECANTER CENTRIFUGE

Decanter Centrifuge, is a water separation device with very high technical requirements for manufacturing technology, with almost absolute accuracy in order to balance centrifugal force thousands of times greater than gravity. The machine design has a long and firm shape.

**ARK has mastered the production technology - in which no company in Vietnam can perform today but importing a full machine abroad.**

To separate the water from the solid, the sludge is pumped into the centrifuge chamber, under the action of centrifugal force when the centrifuge chamber rotates, the sludge and the wastewater are completely separated from each other. This equipment is fabricated from materials with very high strength, corrosion resistance, and durability, so it is suitable for all types of sludge, from municipal, production, or sewage sludge of water plants, industrial plants

#### Benefits of ARK's decanter centrifuge

- Inheriting the quintessence of advanced Korean technology
- Simple and safe operation.
- The machine can work continuously.
- The system is completely closed. The mud is not splashed out, clean and odorless during operation.
- The machine has a minimalist design that takes up little space.



#### Decanter centrifuge specifications

Model	Performance m <sup>3</sup> /h	Dimension (mm)			Motor (D/B)(kw)	Weight (kg)
		Length	Width	Height		
D-LM-NT-R300	5~10	3100	808	895	11/2.2	2000
D-LM-NT-R350	10~15	2800	1000	950	22/3.7	2500
D-LM-NT-R400	15~20	3300	1200	1100	37/7.5	3000
D-LM-NT-R450	20~25	3500	1300	1200	45/11	4000
D-LM-NT-R500	25~30	3900	1400	1400	55/15	5000
D-LM-NT-R550	30~40	4500	1500	1500	55/15	6000
D-LM-NT-R600	40~50	5000	1700	1600	75/22	8500
D-LM-NT-R650	50~60	5100	1800	1700	75/22	9400
D-LM-NT-R700	60~70	5500	1900	1800	90/37	11300





#### IN LET

The sludge is fed through a pipe into the feed area located at the center of the centrifugal chamber. The sludge is then gradually accelerated around the screw circumference and fed through the distribution ports into the cavity.

#### CENTRIFUGAL CHAMBER

The centrifugal chamber is cylindrical/conical shape and rotates at an optimally adjusted preset speed. The sludge rotates with the centrifuge chamber during operation and forms a concentric layer on the wall of the centrifuge chamber. The solids contained in the product are pressed against the cavity wall by centrifugal force. The lengths of the cylindrical cavity and the conical angle are selected to meet specific requirements.

#### SCREW

The screw rotates at a speed independent with the centrifuge chamber and transfers the dewatered solids toward the conical end of the bowl. This differential speed determines the residence time of the solids in the cavity. Residence time is an important factor for solids dryness. It can be adjusted by varying the different speeds of the screw, thus providing optimum separation. The design of the screw depends on the application and separation task.

#### GEARBOX

To reduce the rotational speed when the auxiliary motor drives the screw

#### MAIN MOTOR

Responsible for the main drive, which rotates the centrifugal chamber at a very high speed

#### SLUDGE CAKE OUTLET

After the sludge has been dewatered, it will be pushed out by the screw

#### WATER DRAIN OULET

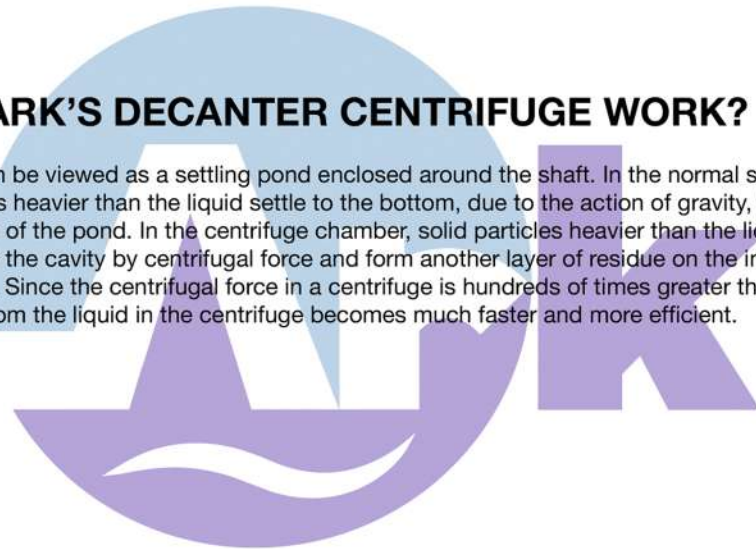
Water, after being separated from the sludge, will come out of this outlet

#### AUXILIARY MOTOR

Responsible for the drive to the screw pushing the dewatered sludge towards the sludge outlet

## HOW DOES ARK'S DECANter CENTRIFUGE WORK?

Decanter centrifuge can be viewed as a settling pond enclosed around the shaft. In the normal settling pond, the solid particles heavier than the liquid settle to the bottom, due to the action of gravity, forming a sediment at the bottom of the pond. In the centrifuge chamber, solid particles heavier than the liquid move to the inner diameter of the cavity by centrifugal force and form another layer of residue on the inner surface of the centrifuge cavity. Since the centrifugal force in a centrifuge is hundreds of times greater than gravity, separating the solids from the liquid in the centrifuge becomes much faster and more efficient.





## SPECIAL DESIGN OF ARK'S DECANTER CENTRIFUGE

The design is optimized to the smallest detail for the best results, and also ensuring ease of maintenance and providing modularity to optimally fit your needs.



### SCREW

Specially designed to reduce the torque generated from the sludge and maximize the filtration rate, resulting in high sludge compaction.

- \* Reduces mud conveying torque, positively affecting gearbox life and bearing size.
- \* High sludge dryness due to better sludge compaction.

**Very high wear resistance screw material, with Tungsten Carbide solder tip**



### CENTRIFUGE CHAMBER

Designed for functional balance, homogeneity, stability, quiet operation, minimal air leakage, high durability, low wear and easily suitable for all kinds of chain conditions treatment, by adjusting the diameter, length, cone inclination angle.

The overall design is optimized to minimize power consumption and give the best drying of the sludge.



### ROLLER

Is a very high precision machined part, ensuring the concentricity of the machine when operating.

Concentricity plays a very important role to maintain the balance of the centrifuge, to generate centrifugal force thousands of times greater than gravity, but still ensure safety when using the machine.

## BALANCE THE CENTRIFUGE CHAMBER

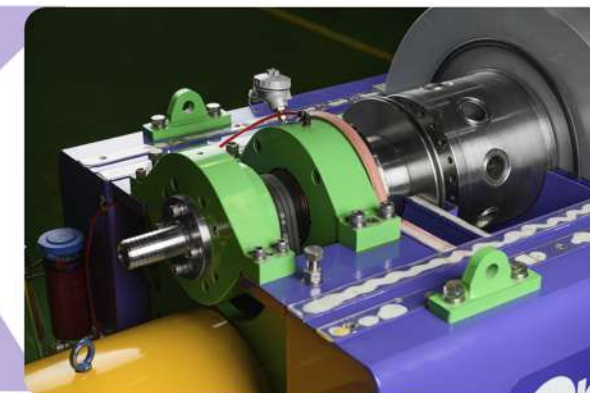
The balance is the most important factor for the decanter centrifuge to operate. To achieve the necessary balance, it is the result of high precision machining technology, which requires advanced and modern techniques.

**ARK Vietnam is proud to be the only enterprise can perform this in Vietnam.**



### BALL BEARING

As an absolutely precision machined part, using super-durable materials, to ensure that the centrifugal cavity and screw operate uniformly and reliably.



### GEARBOX

Adjust the rotation speed of the screw in the centrifugal chamber.

The dryness of the slurry depends on the rotational speed of the screw.

The lower the rotational speed, the longer and drier the sludge is pressed.

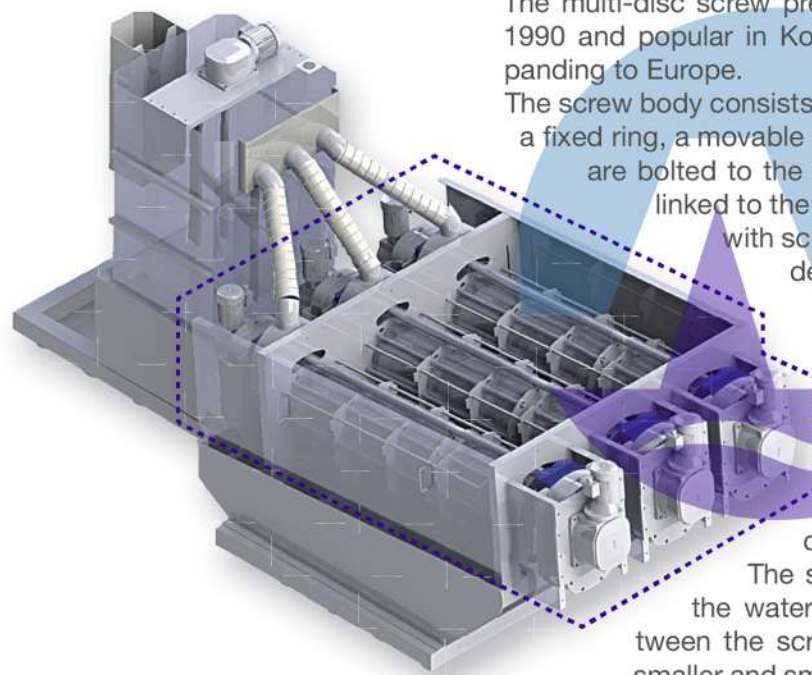
However, it needs to be adjusted appropriately to avoid getting stuck in the centrifuge chamber.





## MANUFACTURING, SUPPLYING SLUDGE DEWATERING MACHINES

### MULTI-DISK SCREW PRESS



The multi-disk screw press was developed in Japan around 1990 and popular in Korea and China, and is gradually expanding to Europe.

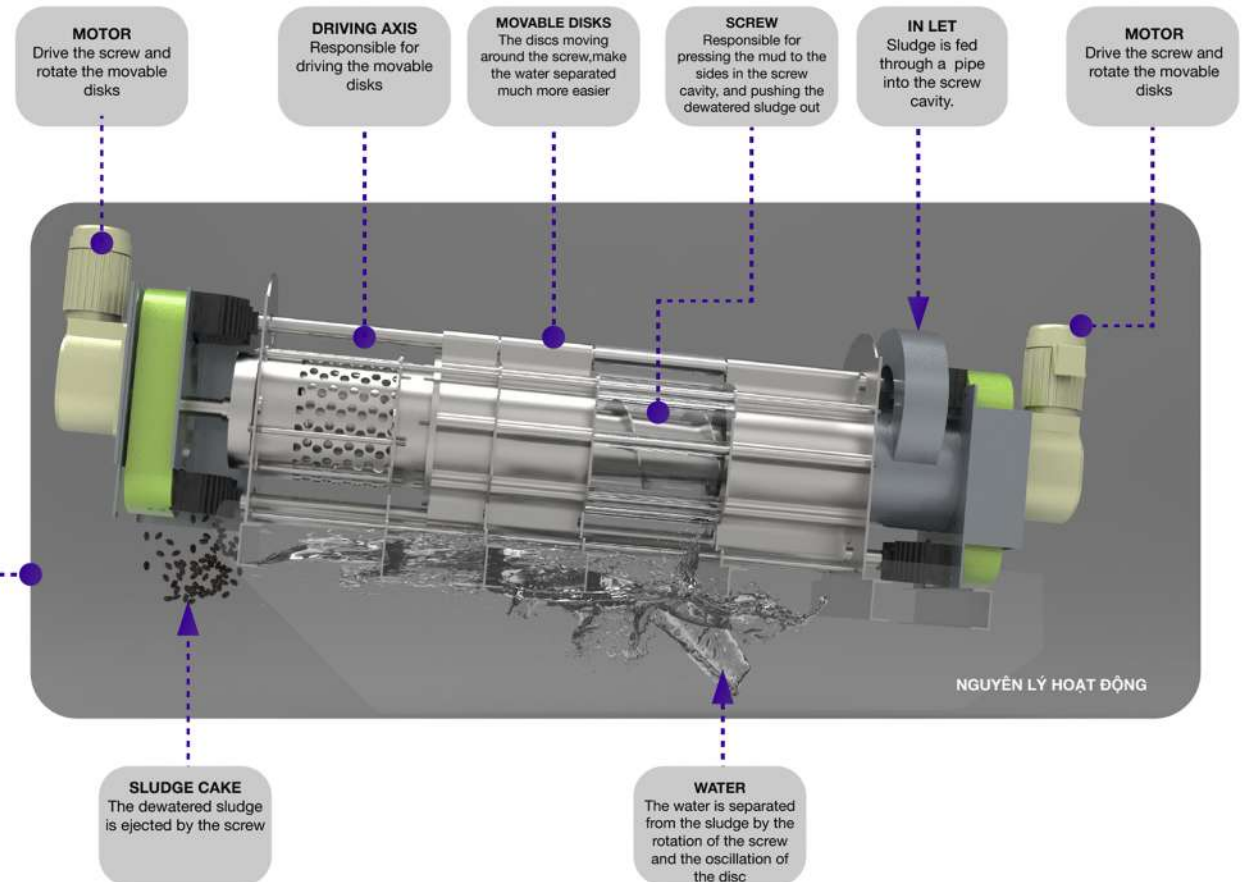
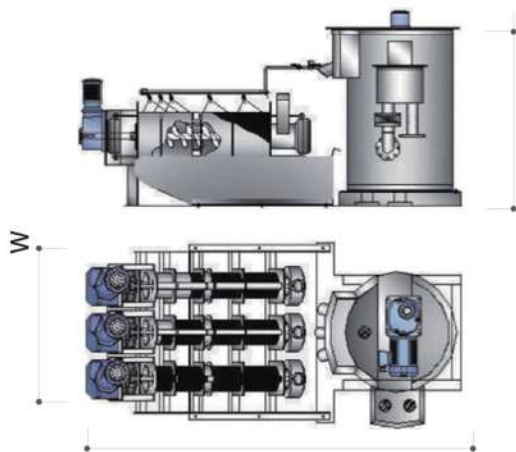
The screw body consists of a tapered screw, a helical impeller, a fixed ring, a movable ring, and a filter tube. The fixing rings are bolted to the 4 fixed shafts. The moving rings are linked to the drive shaft and driven by two motors with screw transmission. The purpose of this design is to make the screw frictionless with the washers.

As a result, the screw shaft does not corrode and the ARK screw-press machine has a longer life than other models on the market, and the screw and rings can automatically clean, avoiding clogging.

The sludge is fed into the screw to force the water. Towards the end the distance between the screw and the screw groove becomes smaller and smaller, result is the increased pressure, the sludge is dewatered effectively. At the same time water is flowing out from the gap between the moving rings and the fixed rings.

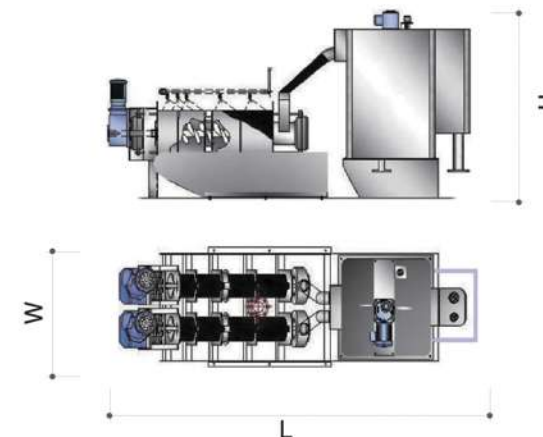
### ST TYPE

The ST type can treat the sludge with extremely low concentrations of suspended solids, less than 1% with an intelligent anti-spill mechanism, pre-filters a large part of the water before it is fed to the press, helping to reduce moisture of the finished sludge.



### RT TYPE

Suitable for sludges with concentrations higher than 2 - 3.5%, the screw body of the S-RT version has the same structure as the modern ST version, which minimizes friction with the washers, providing the ability to operate stably and smoothly for many years.







## SPECIAL DESIGN OF ARK VIETNAM



### MOVABLE DISK

Is the most special part of the ARK screw-press dewatering machine. The movable discs are linked together via 2 drive shafts. During operation, the discs oscillate around the screw, as a result, the drainage becomes faster and more efficient.



### FIXED DISK

Fixed by 4 shafts, shaping the mud press chamber. When the screw rotates, these discs are fixed by independent shafts, so they will not come into contact with the screw blades, so the screw system and the mud press cavity will not be damaged like the others available on the market. Therefore, the service life and performance of the machine is very durable over time.

### SCREW

The screw of the ARK screw press is specially designed, unlike any other machine on the Vietnamese market today.

The screw has a tapered body, able to press sludge stronger, result to the dried sludge. This is a very difficult structure to fabricate, due to the very high accuracy requirements of the screw blade, ensuring smooth operation of the screw and without abrasion.



### FILTER PIPE

In the final stage, the sludge is rolled by the screw to the filter tube position. Here, the screw part has a large size, the screw blade is small, the space is narrowed and the mud is pressed by the screw to the sides of the filter tube. The size of the filter holes is very small, ensuring that the sludge is pressed drier.

### GEARBOX

This box has a special design, which is responsible for generating oscillations to the drive shafts of the movable discs.

This is a special and unique design, unlike any other products currently on the market, creating the brand name of ARK Vietnam.







## MANUFACTURING, SUPPLYING SLUDGE DEWATERING MACHINES

### MULTI DISK SCREW PRESS

#### Advantages of ARK Screw press

- ARK screw press uses modern technology. Improved sludge-polymer reaction tank can handle wastewater with too low sludge concentration. The machine has a mechanism to filter out excessive water, providing a stable sludge. It works most efficiently while avoiding congestion.
- Outstanding improvement with two motors and two gearboxes. The screw system is minimized friction, prolonging the life of the machine.
- The rotation speed of the screw is low, so the power consumption cost is negligible. Better energy-saving than decanter centrifuge or belt-press. The self-contained structure makes it easy to clean.
- The screw press almost does not make annoying noises. They are quiet even after operating for a long time.
- The screw press can be placed in a small space. Suitable for factories with limited area. Easy to operate. Especially, multi screws models (such as ST/RT 203 204 ... ) can be disassembled individual screws for maintenance. The remaining screws can still work normally. Customers do not have to worry about the interruption during maintenance.
- The machine's components are all manufactured and assembled in the ARK factory in Vietnam. This results the prompt maintenance and minimize the repair time.

Model		Dimension (mm)						Power (kW)			Weight (kg)	Performance (kgDS/hr)
		Length	Width	Height				Sedi-mental	Mixing	Screw		
S-ST 101	S-RT 101	2.181	2.103	610	510	1.524	1.030	0.4	0.2	0.1	400	6-8
S-ST 102	S-RT 102	2.181	2.103	900	800	1.524	1.030	0.4	0.2	0.2	600	12-16
S-ST 201	S-RT 201	2.834	2.834	650	700	1.540	1.430	0.4	0.4	0.4	900	15-20
S-ST 202	S-RT 202	2.834	2.834	1.050	1.050	1.540	1.430	0.4	0.4	0.8	1.200	30-40
S-ST 203	S-RT 203	2.834	2.834	1.400	1.400	1.845	1.430	0.75	0.75	1.2	1.500	45-60
S-ST 204	S-RT 204	2.834	2.834	1.720	1.720	1.845	1.430	0.75	0.75	1.6	2.000	60-80
S-ST 401	S-RT 401	4.077	4.377	1.288	900	2.410	1.965	0.75	0.75	0.8	1.200	40-50
S-ST 402	S-RT 402	4.077	4.377	1.528	1.500	2.410	1.965	0.75	0.75	1.6	1.700	80-100
S-ST 403	S-RT 403	4.277	4.377	2.060	2.060	2.186	1.965	1.5	1.5	2.4	2.200	120-150



For clean Aqua  
Perfect treatment for sludge  
Pleasant our Earth







## MANUFACTURING, SUPPLYING SLUDGE DEWATERING MACHINES

### BELT PRESS DEWATERING MACHINE

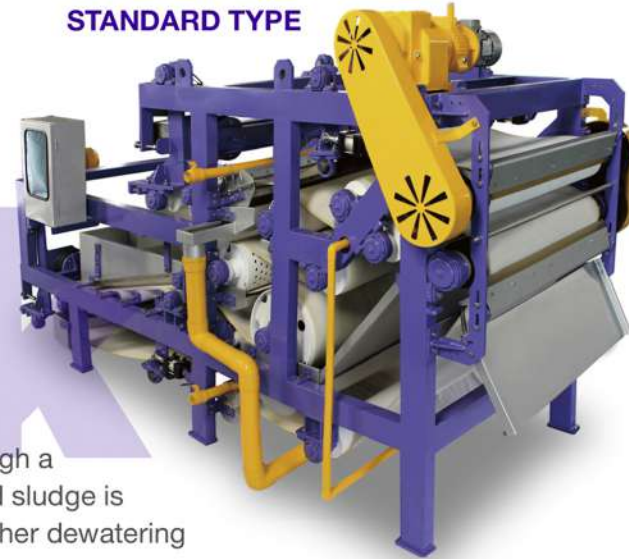
The belt-press dewatering machine is a equipment suitable for all kinds of municipal sewage sludge and a wide range of industrial solid/liquid separation, such as paper, petrochemical, mineral, food processing, pharmaceuticals and chemicals.

The ARK belt-press offers versatility with a wide range of sizes and extensive modular options to meet each customer's process and requirements.

Its working principle is to feed the sludge through a horizontal porous filter conveyor. The thickened sludge is then clamped by a second filter belt before further dewatering by a series of tapered rollers.

**Especially, ARK's roller design has a very large diameter, increasing the pressing area for the slurry, greatly increasing the water separation efficiency.**

#### STANDARD TYPE



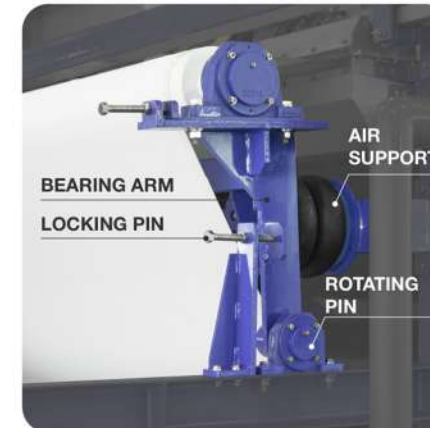
#### ROLLERS

Hot dipped 1 layer of special anti-corrosion, anti-wear, greatly extending the life of the machine



## MANUFACTURING, SUPPLYING SLUDGE DEWATERING MACHINES

### BELT PRESS DEWATERING MACHINE



#### MECHANISM TO MAINTAIN THE BELT'S TENSITY

The filter belt is always maintained in tension thanks to the pneumatic air support mechanism.

When the belt falls down, the air support will be filled with compressed air, pushing the bearing arm away, drive the conveyor stretched.

To ensure filter belt over stretched, the locking pin will limit the travel of the bearing arm.



#### BELT'S DEVIATION DETECTOR

During operation, the filter belt will sometimes be deflected from the roller, or between the two filter belts. Sensors installed on ARK belt-press allow deviation detection and automatic correction.



#### PNEUMATIC MECHANISM TO ADJUST BELT'S DEVIATION

When the filter belt is deflected, the pneumatic adjustment mechanism will be activated.

The belt will be pushed by the pneumatic piston in the opposite direction to the direction of deviation, and will gradually adjust to the correct position.



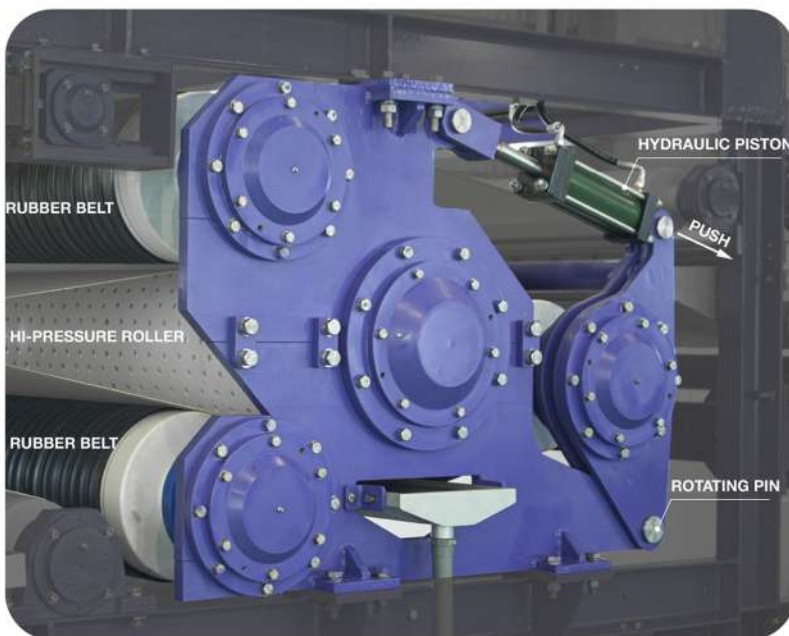


## MANUFACTURING, SUPPLYING SLUDGE DEWATERING MACHINES

### BELT PRESS DEWATERING MACHINE

#### HI-PRESSURE TYPE

Is the unique design of ARK Vietnam.  
The machine is enhanced with a mechanism to increase the pressure by hydraulic pistons, pressing belts, and rollers.  
With this design, the slurry is squeezed out to achieve low moisture content which can be down to 60%.



#### HIGH PRESSURE MECHANISM

The structure of the pressure boosting mechanism includes: a rubber belt system wrapped around 3 high-pressure rollers, high-pressure rollers, and hydraulic pistons.  
The hydraulic piston will push 1 roller in the 3-roller system, drive the rubber belt system to stretch and press on the high-pressure roller.  
When the mud passes through this high pressure roller, it will be tightened by the rubber belt system to the surface of the high pressure roller.  
As a result, when the sludge passes through the booster system, it will be much drier than the standard type.



## MANUFACTURING, SUPPLYING SLUDGE DEWATERING MACHINES

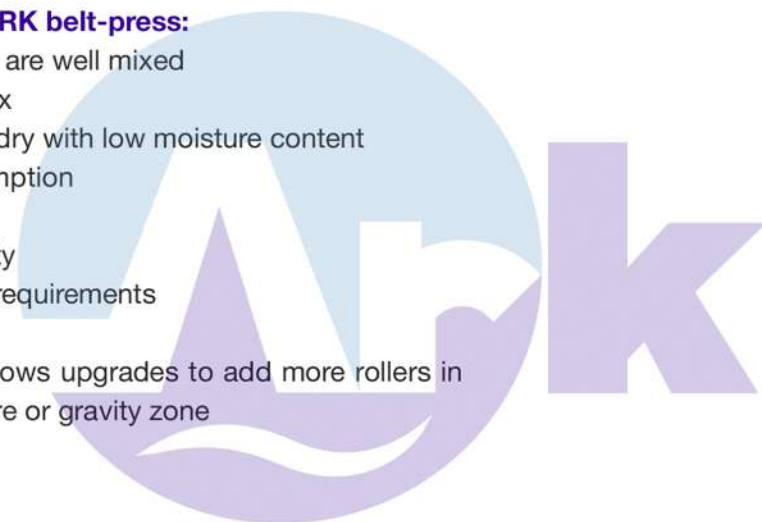
### BELT PRESS DEWATERING MACHINE

The ARK belt-press has many design capacities to suit the diverse needs of customers.

Model	Belt (mm)	Dimension (mm)			Power (kw)		Weight (kg)	Performance (m3/h)
		Length	Width	Height	Driving	Mixing		
B-MT-NP-W650	650	3150	1015	1970	0.4	0.4	1800	0.5-3
B-MT-NP-W100	1000	3950	1740	2105	0.75	0.75	3100	3.0-6.5
B-MT-NP-W1500	1500	5450	2250	2360	1.5	0.75	5200	4.0-9.5
B-MT-NP-W2000	2000	5450	2750	2360	1.5	0.75	7000	6.0-14
B-MT-NP-W2500	2500	5650	3300	2460	2.2	1.5	11000	8.0-17
B-MT-NP-W3000	3000	5650	3800	2460	2.2	1.5	13000	10-21

#### Benefits of using ARK belt-press:

- Polymer and slurry are well mixed
- High volumetric flux
- Sludge is pressed dry with low moisture content
- Low power consumption
- Use less polymers
- Better filtrate quality
- Low maintenance requirements
- Long life design
- Modular design allows upgrades to add more rollers in an extended pressure or gravity zone





## MANUFACTURING, SUPPLYING SLUDGE DEWATERING MACHINES

### FILTER PRESS DEWATERING MACHINE

The filter-press is a batch-operated device that separates liquids and solids using pressurized filtration. The sludge is pumped into the machine, then filtered and dewatered by pressure. A filter press can be used for wastewater treatment in many different industries and applications.

A plate-frame filter press has four main components:

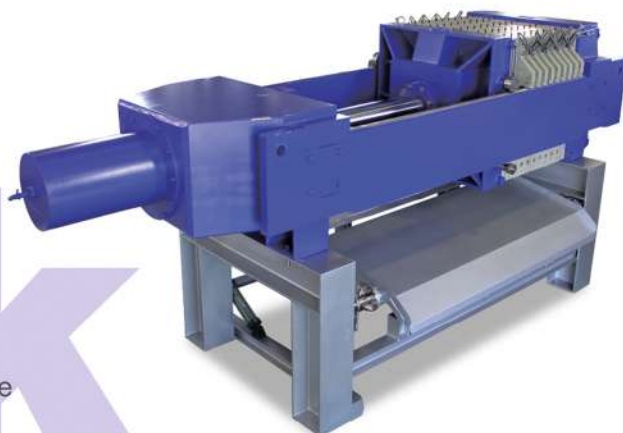
**Frame:** The steel frame acts as a clamping device for the filter plates.

**Filter Plates:** Filter cakes form in the cavities between the filter plates.

**Filtered water collection tray:** discharge sediment and filtrate

**Filter cloth:** A cloth filter is attached to both sides of the filter plate.

Solids accumulate on the fabric to form a filter cake, which separates the water from the slurry.



Hydraulic piston



Filter plates



Water collection tray



Clamping



ARK designs and produces many types of filter presses, suitable for many different needs of customers

### Specifications

Model	Filtrate area (m <sup>2</sup> )	Dimension (mm)			Weight (kg)
		Length	Width	Height	
F-SA-1000-30	49	5600	1540	2278	10 000
F-SA-1000-40	66	6300	1540	2278	11 000
F-SA-1000-50	82	7000	1540	2278	12 000
F-SA-1000-60	99	7900	1540	2278	13 500
F-SA-1500-40	154	8300	2260	3005	26 000
F-SA-1500-60	231	10000	2260	3005	32 000
F-SA-1500-80	308	12000	2260	3005	40 000
F-SA-1500-100	385	14000	2260	3005	46 000
F-SA-2000-60	405	14000	3200	4200	79 000
F-SA-2000-80	540	16500	3200	4200	97 000
F-SA-2000-100	676	19000	3200	4200	115 000
F-SA-2000-120	811	21000	3200	4200	135 000

### BENEFITS OF ARK'S FILTER PRESS

Rugged and reliable machine with no adjustment during operation and reduced maintenance

Low energy cost and little reagent (flocculating agent) required

Reduced manpower required: supervision only for moving plates

Highest efficiency of all mechanical dehydrators: dryness > 30%

The high dryness of the mud cake allows for easy sludge reduction and storage (stored in heaps on a flat area).

Very easy to use





## SUPPLYING AUXILIARY EQUIPMENT AND MATERIAL FOR SLUDGE DEWATERING WORK

### POLYMER DISSOLVING EQUIPMENT



FTα-E-1

#### FREETA-α 3-stage powder and emulsion dissolving device

FREETA-α is a 3-stage powder and emulsion dissolving equipment, consisting of storage, feeding system, mixing tank and dissolving tank. This equipment maintains a constant concentration of dissolution by automatically controlling the polymer amount and water ratio

Model	Performance	Dimension (mm)	Power (kW)
FTα-P/E-1	1m3	1000Wx1960Lx750H	1.11kW(0.37kWx3EA)
FTα-P/E-2	2m3	1000Wx2100Lx1010H	2.25kW(0.75kWx3EA)
FTα-P/E-3	3m3	1220Wx2410Lx1200H	2.25kW(0.75kWx3EA)
FTα-P/E-4	4m3	1490Wx2580Lx1230H	2.25kW(0.75kWx3EA)
FTα-P/E-5	5m3	1490Wx2580Lx1230H	2.25kW(0.75kWx3EA)
FTα-P/E-6	6m3	1524Wx3048Lx1534H	2.25kW(0.75kWx3EA)
FTα-P/E-7	8m3	1524Wx3920Lx1534H	4.5kW(1.5kWx3EA)
FTα-P/E-8	10m3	2240Wx3440Lx1534H	4.5kW(1.5kWx3EA)



FTβ-E-500

#### FREETA-β 1 stage powder and emulsion dissolving equipment

FREETA-β is a single stage emulsion and powder dissolving equipment, designed due to the need to dissolve emulsion type polymer in smaller volume. The equipment consists of a polymer tank and a system of dissolving equipment in a single tank.

Model	Performance	Dimension (mm)	Effective volume	Remark
FTβ-E-500	0.4kW	500Wx500Lx1250H	0.2m3	20L chemical tank
FTβ-E-900	0.4kW	900Wx900Lx1250H	0.7m3	1 chemical tank 20Lx2



## SUPPLYING AUXILIARY EQUIPMENT AND MATERIAL FOR SLUDGE DEWATERING WORK

### POLYMER METERING PUMP

It is a small device, but indispensable in the sludge pressing operation system.

ARK Vietnam produces many types with different capacity, suitable for all needs of customers.



Model	Flow rate (litre/hour)	Pressure (bar)	Power	Performance (kW)
ARMP-50	3	3	220V:380V/50Hz	0.18 kW
ARMP-100	6	3	220V:380V/50Hz	0.18 kW
ARMP-300	18	3	220V:380V/50Hz	0.18 kW
ARMP-500	30	3	220V:380V/50Hz	0.18 kW
ARMP-1200	72	3	220V:380V/50Hz	0.18 kW
ARMP-1800	108	3	220V:380V/50Hz	0.18 kW
ARMP-2300	138	3	220V:380V/50Hz	0.18 kW
ARMP-2800	168	3	220V:380V/50Hz	0.18 kW
ARMP-3400	204	3	220V:380V/50Hz	0.37 kW
ARMP-4000	240	3	220V:380V/50Hz	0.37 kW
ARMP-4600	276	3	220V:380V/50Hz	0.37 kW
ARMP-5200	312	3	220V:380V/50Hz	0.37 kW
ARMP-5800	348	3	220V:380V/50Hz	0.37 kW
ARMP-6200	372	3	220V:380V/50Hz	0.37 kW
ARMP-6700	402	3	220V:380V/50Hz	0.37kW





## SUPPLYING AUXILIARY EQUIPMENT AND MATERIAL FOR SLUDGE DEWATERING WORK

### POLYMER MATERIAL

#### ARK Chemical

The company has a lot of experience, skills and in-depth knowledge in the field of sludge treatment, which can assist customers in choosing the most suitable polymer product.



Parameters	Disperse polymers	Emulsion Polymer	Powder Polymer
Viscosity	10-500mPa-s	15-1000mPa-s	-
Dissolving time	3-10 minutes	30-60 minutes	30-120 minutes
Freezing temperature	0 Celcius degree	-3 Celcius degree	-
Solvent	Water	Oil	None
Emulsination	No	Yes	None
Contain tank	PE tank	FRP tank	None

#### ARK Chemical

ARK Chemical polymer flocculants are manufactured using the Hanaro and Damoa series, which were the first commercialized products in Korea. As pioneers in the field of wastewater treatment, both companies have continued to show remarkable performance in the areas of sludge treatment, sludge thickening and de-sludging.



##### Hanaro Series-1

Is a kind of high-concentration liquid emulsion product developed by high-tech organic polymer synthesis method.



##### Damo Series-1

Is a kind of cationic powder product whose main ingredient is polyacrylamide

##### Damo Series-2

As a non-ionic and anionic flocculant that can withstand various conditions from acidic to alkaline



## 03 AFTERSALE SERVICE

### 3.1 Warranty

### 3.2 Spareparts





## WARRANTY SERVICE

### A COMPREHENSIVE SUPPLIER

Our service philosophy is simple: One phone call, one contact person, one team of experts.

This philosophy is not just words, but is guaranteed by a network of very experienced sludge dewatering experts.

Whether you need spare parts, rentals, on-site service, repair, upgrade or modernization of your equipment, ARK is the expert in all of these areas.

From the initial consultation, especially ARK is ready to test run the machine, proving the capacity and operation of our equipment.

ARK strives to minimize downtime, improving your overall production efficiency.



## SPAREPARTS

At ARK, we always have a warehouse of spare parts and supplies to serve the maintenance and repair work of our customers.

We offer affordable, 365-day support, and a highly qualified technical team to ensure client's continuous operation.

**For decanter centrifuge and screw press dewatering machines, due to having a factory right in Vietnam, the repair and replacement becomes easier than ever.**

**Customers will minimize the idling time, because everything is available, and do not have to wait for imports as other enterprises.**





# 04 Clients

## 4.1 Acknowledgement

## 4.2 ARK's footprint



## ACKNOWLEDGMENT

With strong resources such as: experienced, responsible human resources, modern equipment, complete operation process, we have met the strict requirements and built trust from the customers in Vietnam and over the world.

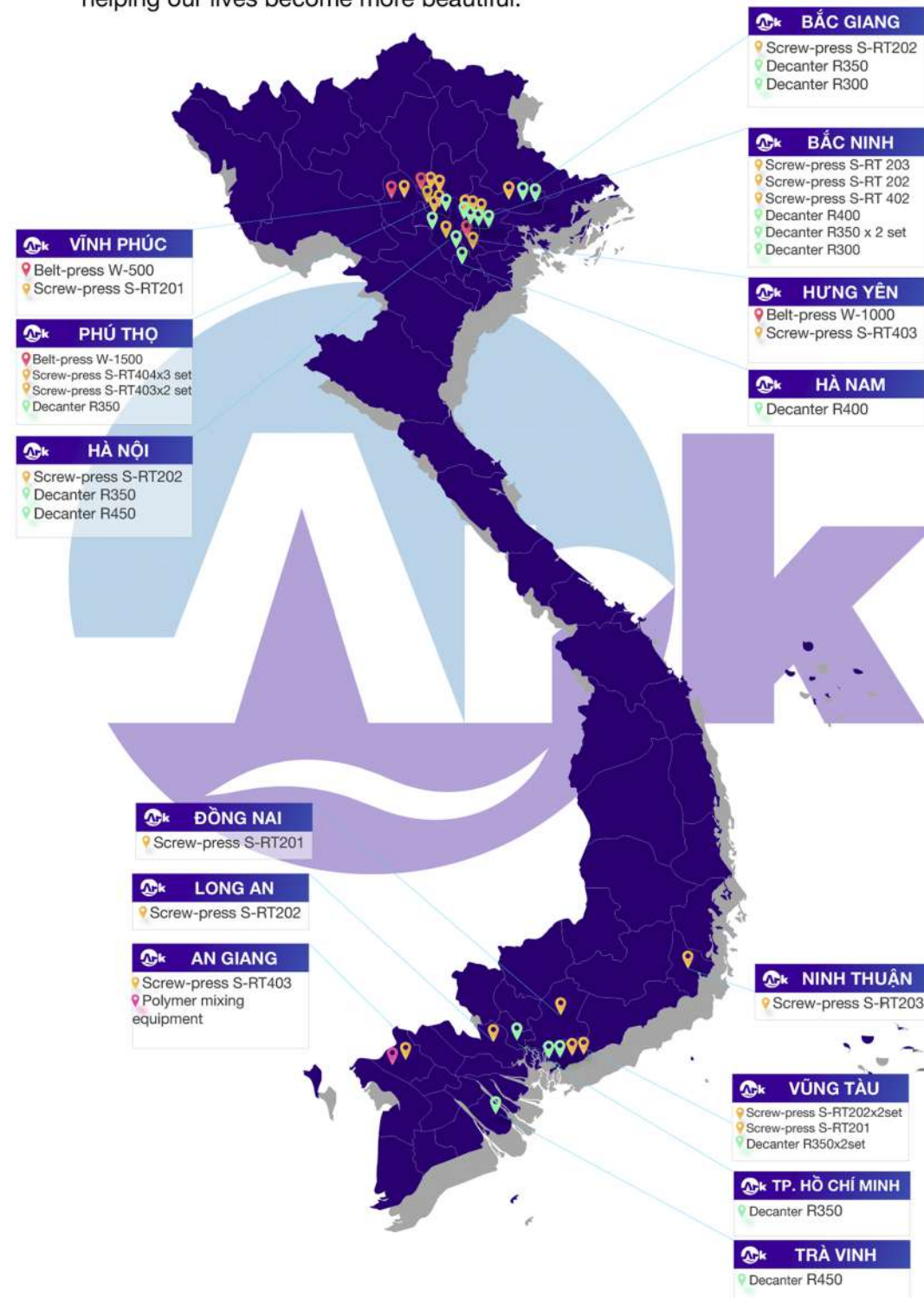
With the motto and vision in business, we always aim to improve products and services, so as not to betray the trust of our customers during the past decades.

**Sincerely thanks.**



## ARK'S FOOTPRINT

After many years of development, ARK Vietnam has been present in many provinces in Vietnam in particular and more than 10 countries in the world, the most demanding places such as Japan, Europe, and even the United States. This achievement is the result thanks to the spirit of self-discipline, aiming to further perfect the product, and above all, the business philosophy that wants to contribute to the protection of the environment, water resources on earth, helping our lives become more beautiful.



## ARK'S FOOTPRINT

### Projects in Vietnam





## ARK'S FOOTPRINT

Projects in Vietnam



## ARK'S FOOTPRINT

Projects in Vietnam



Location: Vinh Phúc  
Sludge type: Dying plant  
Machine type: Screw press  
S-RT 201  
Performance and humidity:  
0.8~1.5m<sup>3</sup>/h & 78%



Location: Hà Nam  
Sludge type: Industrial  
Machine type: Decanter R-400  
Performance and humidity:  
15~18m<sup>3</sup>/h & 75%



Location: Phú Thọ  
Sludge type: Municipal  
Machine type: Screw press  
S-RT404 X 3  
Performance and humidity:  
40~50m<sup>3</sup>/h & 80%



Location: Bắc Ninh  
Sludge type: septic tank sludge  
Machine type: screw-press S-RT 402  
Performance and humidity:  
6~8m<sup>3</sup>/h & 82%



Location: Bắc Ninh  
Sludge type: factory  
Machine type: Screw press S-RT 203  
Performance and humidity:  
3~5m<sup>3</sup>/h & 80%



Location: Bắc Ninh  
Sludge type: factory  
Machine type: Screw press S-RT 202  
Performance and humidity:  
2~3m<sup>3</sup>/h & 82%



Location: Long Xuyên  
Sludge type: Municipal  
Machine type:  
Screw press S-RT 403 x 2 set  
Công suất & độ ẩm:  
25~30m<sup>3</sup>/h & 78%



Location: Hưng Yên  
Sludge type: food factory  
Machine type: Belt press W-1000  
Performance and humidity:  
4~7m<sup>3</sup>/h & 75%



Location: Phú Thọ  
Sludge type: paper factory  
Machine type: Belt press W-1500  
Performance and humidity:  
8~12m<sup>3</sup>/h & 78%



Location: Bắc Ninh  
Sludge type: Industrial  
Machine type: decanter R-400  
Performance and humidity:  
15~18m<sup>3</sup>/h & 80%

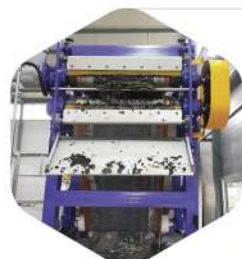


## ARK'S FOOTPRINT

### Projects in Vietnam



Location: Vinh Phúc  
Sludge type: Dyeing factory  
Machine type: screw press S-RT 201  
Performance and humidity:  
0.8~1.5m³/h & 78%



Location: Vinh Phúc  
Sludge type: factory  
Machine type: Belt-press W-500  
Performance and humidity:  
2.5~4m³/h & 80%



Location: Vũng Tàu  
Sludge type: water supply plant  
Machine type: screw press S-RT 202  
Performance and humidity:  
2~3m³/h & 80%



Location: Hưng Yên  
Sludge type: Municipal  
Machine type: screw press S-RT 403  
Performance and humidity:  
12~15m³/h & 80%



Location: Vũng Tàu  
Sludge type: water supply plant  
Machine type: screw press S-RT 202  
Performance and humidity:  
2~3m³/h & 80%



Location: Long An  
Sludge type: water supply plant  
Machine type: screw press S-RT 202  
Performance and humidity:  
2~3m³/h & 80%



Location: Hà Nội  
Sludge type: factory  
Machine type: Máy Trục Vít S-RT 202  
Performance and humidity:  
2~3m³/h & 78%



Location: Ninh Thuận  
Sludge type: water supply plant  
Machine type: screw press S-RT 203  
Performance and humidity:  
3~5m³/h & 82%



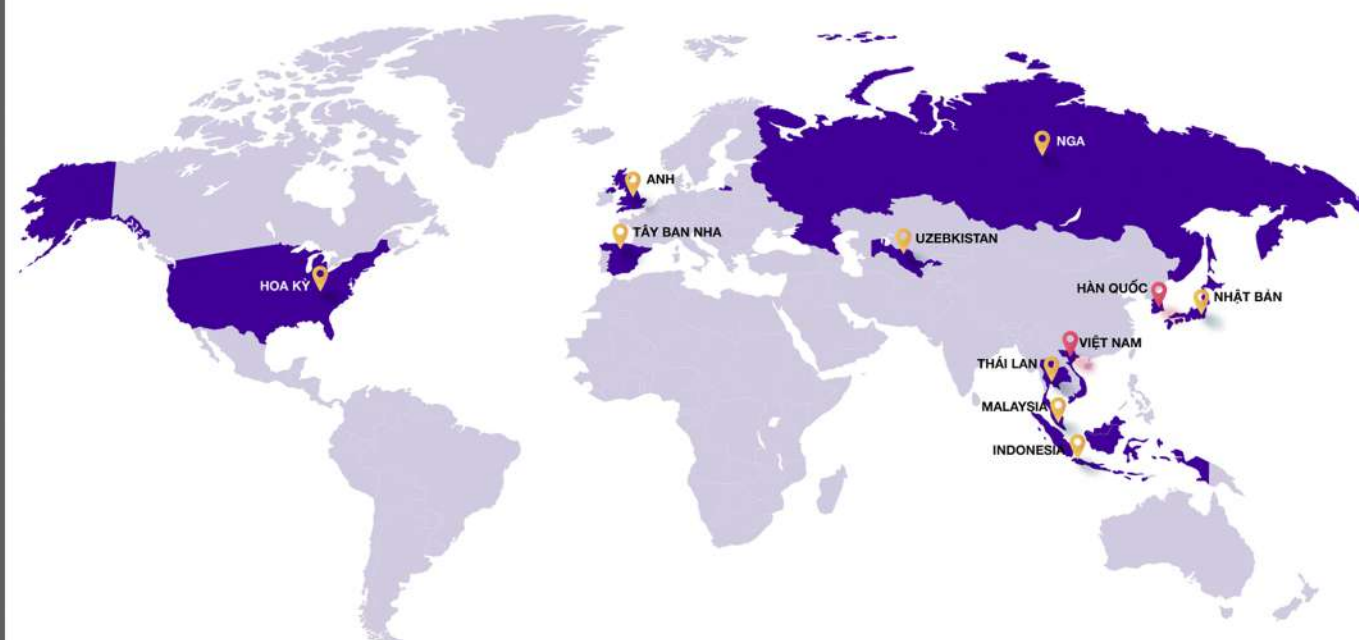
Location: An Giang  
Sludge type: Polymer mixing tank  
Dung tích: 5m³/h



Location: Bắc Giang  
Sludge type: Industrial  
Machine type: screw press S-RT 202  
Performance and humidity:  
2~3m³/h & 78%

## ARK'S FOOTPRINT

### Global







#### VIETNAM, HANOI OFFICE

5th Floor, N03T7 Building, Ngoai Giao  
Doan Resident, Bac Tu Liem, Hanoi

Consultant:  
**C.P** +84 9 77 675 754  
**E.** arkvn234@gmail.com

#### VIETNAM, HCMC OFFICE

197 Huynh Tan Phat Street,  
Tan Thuan Dong, 7th District, HCMC

Consultant:  
**C.P** +84 9 77 675 754  
**E.** arkvn234@gmail.com

#### VIETNAM, BAC GIANG FACTORY

Lot FJ-11, FJ-12, FJ-13, Song Khe,  
Industrial Zone Noji Hoang (southern),  
Tien Phong, Yen Dung, Bac Giang

**T.** +84 2403 661 849  
Consultant:  
**C.P** +84 961 358 516 (Korean)  
**C.P** +84 968 376 203 (Vietnamese)  
**E.** ark234@gmail.com

#### KOREA OFFICE

1 dong 203-17, Eunhaengnamu-ro,  
Yanggam-myeon, Hwangseong-si,  
Gyeonggi-do, 18633, Korea

Consultant  
**T.** +82 31 354 7223  
**F.** +82 31 8059 6895  
**E.** sludge234@gmail.com